



Celebrating VICTORIA PARK

Municipality of Kincardine

POP UP ENGAGEMENT SESSION

OCTOBER 1, 2024
5:30 p.m. to 7:30 p.m.

Understanding THE PROCESS

GETTING STARTED

Site Inventory

Visiting the site on several occasions, we inventoried existing conditions — identifying strengths, weaknesses, opportunities and constraints.

Observations and measurements included:

- Existing facilities (e.g., gazebo)
- Existing interpretive elements (i.e., cannons, plaques, etc.)
- Existing trees and significant vegetation
- Existing pathways and desire lines
- Access and egress
- Parking



Listening & Learning

Working with municipal staff to understand past and present use — identifying current limitations and opportunities for improvement.

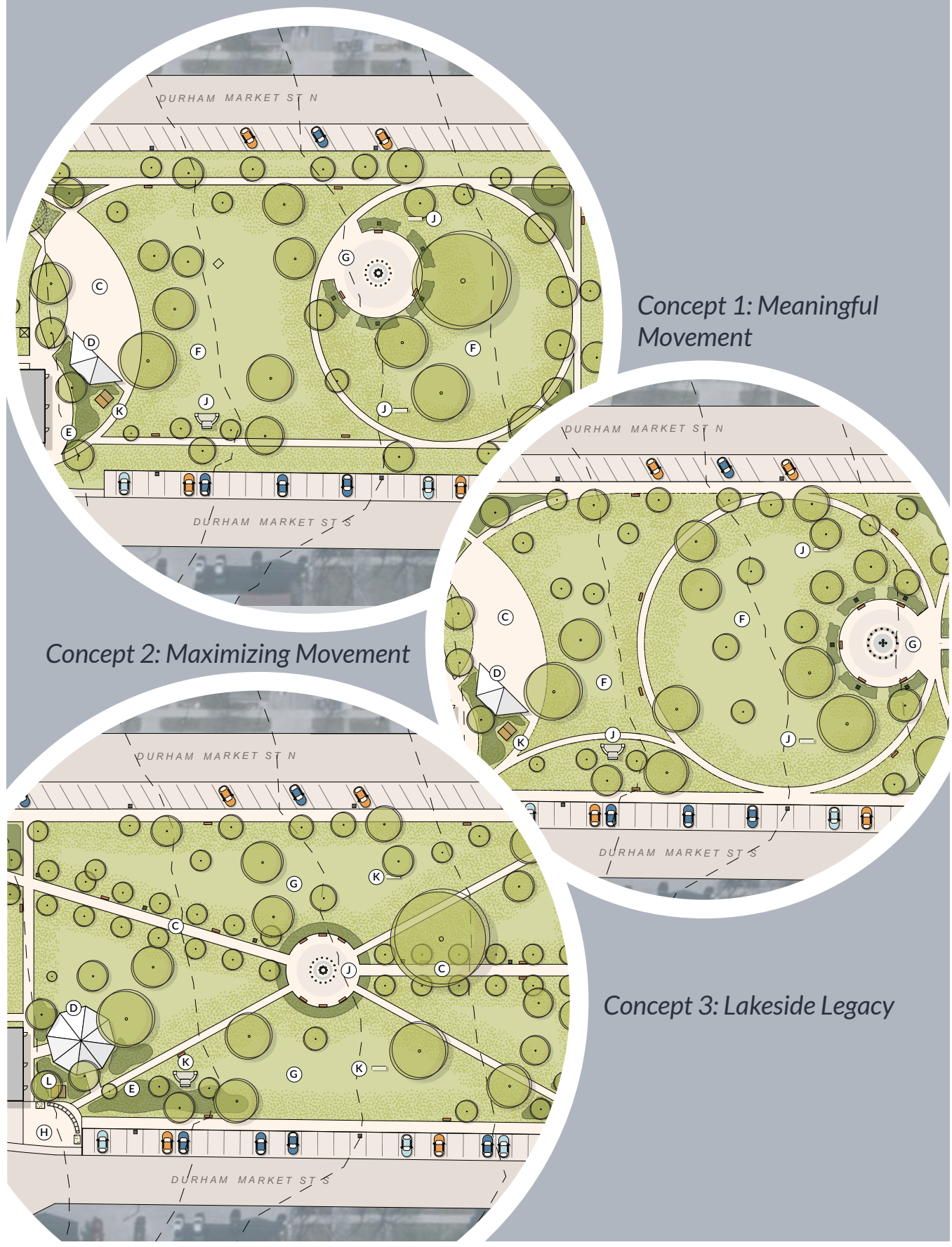
Considerations included:

- Aging infrastructure
- Visitor safety
- Accessibility and AODA compliance
- CPTED (Crime Prevention Through Environmental Design)
- Respecting the past, understanding the present, anticipating the future
- Fiscal responsibility
- Maintenance capacity



Concept Development

Three preliminary concept plans were prepared, to foster community conversation and solicit feedback.



ENGAGEMENT

Project information was shared and community input has been collected through:



Open House

June 6, 2024 — Kincardine Welcome Centre



Online

June 6 through 21, 2024 — online comment opportunity made available



AAC Meeting

July 25, 2024 — Kincardine Accessibility Advisory Committee Meeting



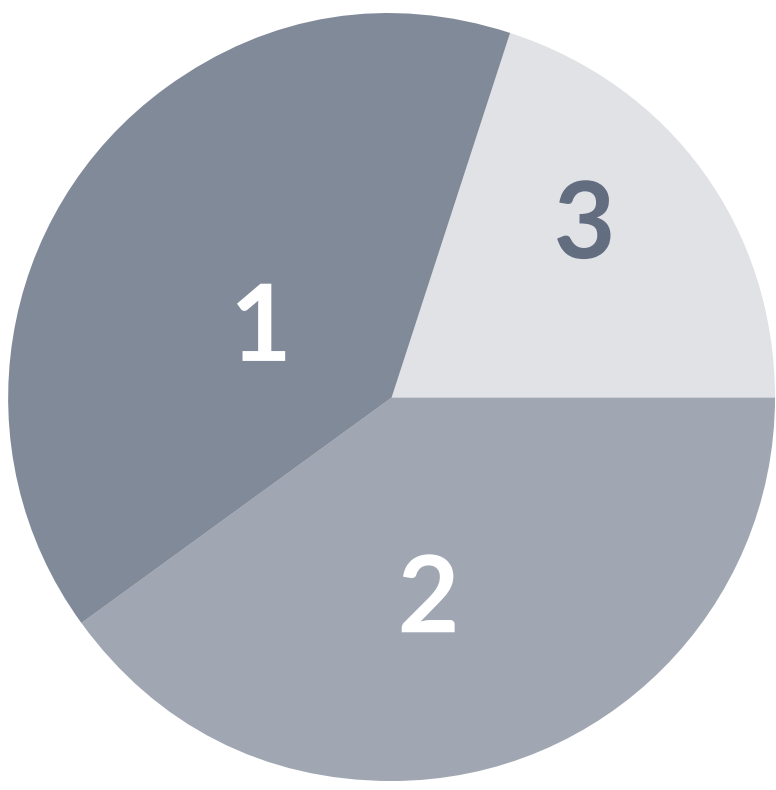
Email

Correspondence from passionate residents and Councillors alike

We heard:

Preference

Collectively, Concepts 1 & 2 were preferred.

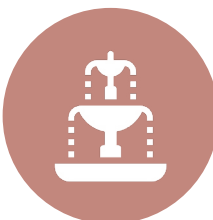


■ Concept 1: Meaningful Movement
■ Concept 2: Maximizing Movement
■ Concept 3: Lakeside Legacy

Themes & Priorities



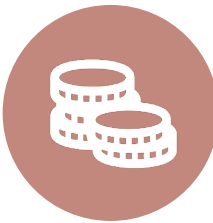
Creating Spaces for Everyone & Improving Accessibility



Celebrating Legacy; Honouring History



Maintaining and Enhancing Canopy Cover



Promoting Fiscal Responsibility



Plan for Longevity & Realistic Maintenance

Community Voices

“... the park definitely needs some upgrades. Making it accessible should be priority number one... I’m so happy to see so many wonderful equitable improvements to our community...”

— Anonymous

“Love the idea of revitalizing the park! A band shell for music performances at one end, ... more accessible pathways, ... keep the healthy trees, ... keep historic features where possible.”

— Anonymous

“The [Municipality] needs to invest in public spaces to keep them beautiful and accessible for all.”

— Anonymous

Celebrating HISTORY

UNDERSTANDING THE PAST



A millstone brought from Scotland for the grist mill located on Mill Creek in Port Elgin in 1854 (2020.100.083a/b Mill, Buhr, 1854).



A social event in Victoria Park, Kincardine (Scougall, 1900).



Young girl standing near Victoria Park Fountain (Scougall, 1874).

Industry Origins

By 1867, Kincardine was home to an array of accommodations, services and small industries.

- Grist and flour mills were particularly important.
- Kincardine was the recipient of the first municipal bonus granted in Bruce promoting industrial growth, to erect a mill in 1853.

Originally, the site was known as **Durham Market Square**.

- In 1845, it was designated as 'open space' in an original survey completed by Provincial Land Surveyor, Allan Park Brough.
- By 1877, Durham Market Square was home to a public park, as well as a public market
- The market operated daily, aside from Sundays and holidays.

Diamond Jubilee

Queen Victoria's Diamond Jubilee occurred in 1897.

- Celebrating her 60 years on the throne.
- Civic celebrations, complete with parades, fireworks, banners and decor, occurred across Canada.
- Celebrations were reported to have brought together Canadians from diverse backgrounds.
- Children were very involved in the celebration, especially in parades.

A fountain was constructed in Durham Market Square for the occasion.

- Council financed the fountain, but lack of funding prohibited further celebration.
- Shortly after, in commemoration, the park was renamed **Victoria Park**.

The Fountain

Constructed to in commemoration of Queen Victoria's Diamond Jubilee.

- Erected in 1897.
- A request for a fountain and trough for watering horses was made to Council years earlier —unclear if this influenced the eventual installation.

Over the years, the fountain fell into disrepair, sometimes for years at a time.

- Notable restoration works occurred in 1982 and 2013.
- The stone basin was disassembled, numbered and reassembled upon a new foundation with new mortar.
- It is understood the original fountain is **not intact today** — after decades of retrofit and component replacement.
- Near identical models available from an American metal fabricator.



DID YOU KNOW?

This is not the first time the fountain has fallen into disrepair — it has happened throughout history.

As a result, the feature has been altered and components replaced over time.

It is understood that the original fountain is not intact today.

Restorative masonry works in 2013 (Ron Farrell Masonry, n.d.)

Community Directed HYBRID CONCEPT



KEY TAKEAWAYS



WELCOMING VISITORS

A plaza extension to the northwest provides adequate space to enter and access the park — suited to light pedestrian use, event crowds and check-in, parade access and more.



PROTECTING MATURE CANOPY

Initial review suggests all existing trees on site may be preserved (subject to tree health assessment). Additional trees may be proposed in select areas, to support canopy longevity.



CELEBRATING HERITAGE

Leaning into marketplace, trading and industry origins, proposed pathways offer a continuation of a lakeside downtown, emulating moving water passing by a 'millstone' plaza towards a refined fountain space.



CONNECTING FACILITIES

A new ramp environment in the southwest corner is designed to permit pedestrian thoroughfare around to the front of the Performing Arts Centre — mitigating unsafe crossings.



REALIGNING PERFORMANCES

Natural topography creates an amphitheater like arrangement around an on-grade performance stage — without compromising sight lines.



ENHANCING PARKING

Strategic improvements maintain capacity (i.e., 86 spaces), while improving safety and facilitating easier access.



LIGHTING UP THE SPACE

New lighting along the main walkway and plaza improve safety and permit pedestrian use into the evening.



CATERING TO MARKETS & EVENTS

A designated walkway with 'flex' space along the south property line is fit for vendors and event tents.



IMPROVING ACCESSIBILITY

- New development will comply with the AODA Integrated Accessibility Standards, as well as the Municipality's Facility Accessibility Design Standards (FADS) — including, but not limited to:
- Exterior paths — min. width 1600mm, min. 2100mm of headroom clearance.
 - Exterior ramps — min. width of 1100mm, max. running slope of no more than 1:20.
 - Surfaces — pathway and ramp materials will be firm, stable, and slip resistant, with no openings larger than 20mm.



REDUCES PAVING

Walkways are simplified from earlier concept renditions, to reduce overall hardscape and minimize associated costs (e.g., installation, maintenance) and impact.

A PLACE FOR PERFORMANCE — DAY OR NIGHT



Midday Music in the Park; view facing northwest



Evening Concerts; view from above, facing southwest



Sunny Days; plan view



After Dark; plan view

SUPPORTING EVENTS – FACILITATING MOVEMENT



Morning Markets; view facing south



Summer Strolling; view facing southwest



Cool Under the Canopy; view facing northwest

CELEBRATING HISTORY — FINDING BALANCE



Space to Rest and Recharge; view facing south



A Place to Reflect; view facing southeast



Opportunity to Learn; view facing northeast

CELEBRATING HISTORY — FRONT & CENTER



Space to Rest and Recharge; view facing south



A Place to Reflect; view facing southeast



Opportunity to Learn; view facing northeast

We're glad you came THANK YOU

FEEDBACK OPPORTUNITY

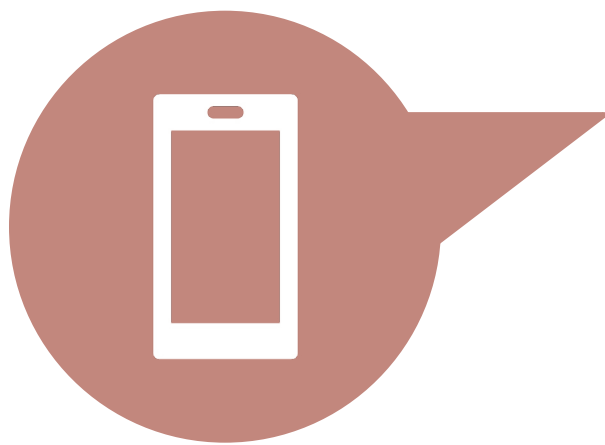
We want to hear from you!

Please take a moment to complete our survey:



In-Person

Print copies may be completed during the event. Please return them to our team before you leave!



Online

The survey can also be accessed online, using the following link or by scanning the QR code.

www.kincardine.ca/VPHC-Survey



For more information, visit us at:
www.kincardine.ca/victoria-park